



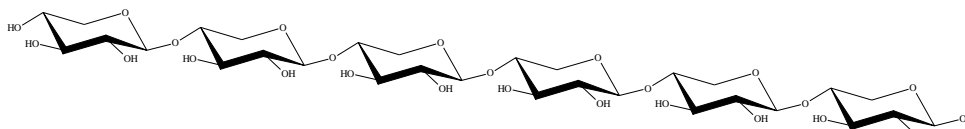
## XYLOHEXAOSE (Lot 161006)

O-XHE

12/16

MW: 810.70

CAS: 49694-21-5



### PREPARATION:

Prepared by controlled acid hydrolysis of arabinoxylan.

PURITY: > 95%

### HPLC:

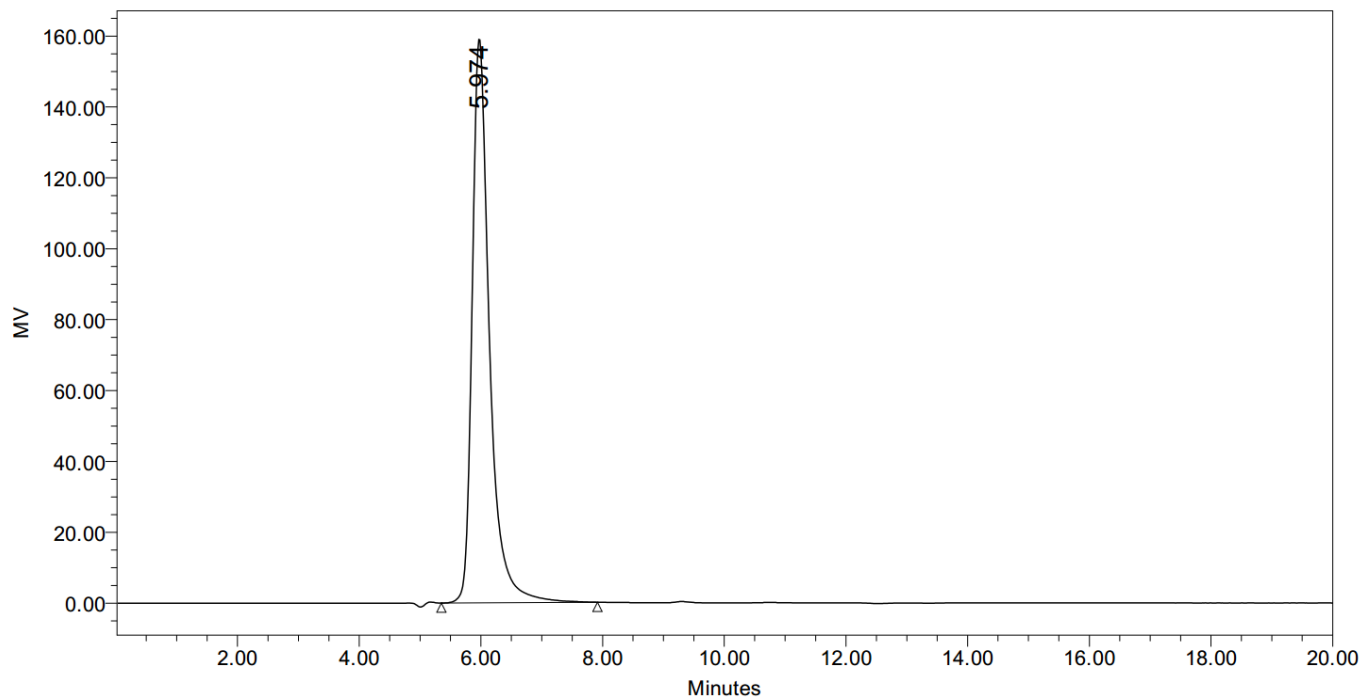
Column: Waters SugarPak I (6.5 x 300 mm)

Temperature: 90°C

Mobile phase: dH<sub>2</sub>O with disodium calcium EDTA (50 mg/L) [Sigma Cat No. ED2SC]

Flow rate: 0.5 mL/min

HPLC system: Waters Breeze system, Waters 2410 RI detector and Empower v 2 software



	RT	Area	% Area	Height
1	5.974	3148815	100.00	159251

**HPAEC-PAD:**

Column: CarboPac PA200 guard and analytical columns (3 x 250 mm).

Temperature: 30°C

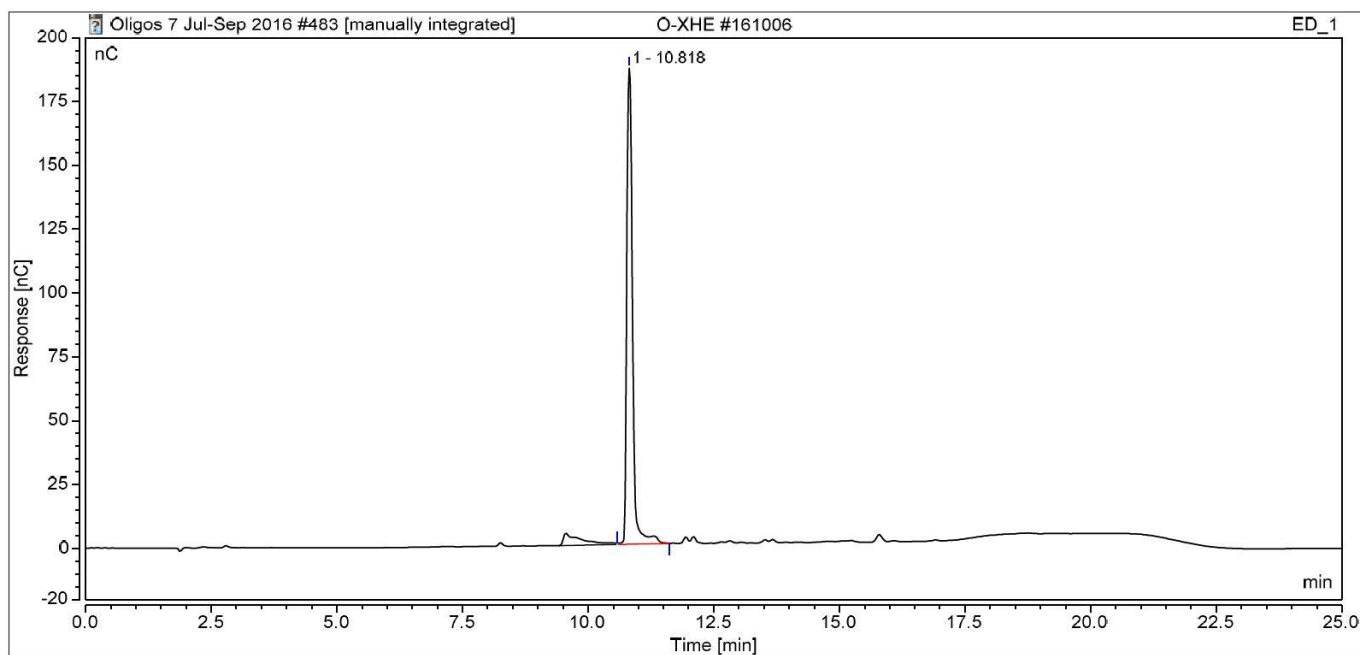
Detector: Au electrode; waveform Carbohydrate, standard quad

Flow rate: 0.5 mL/min

IC system: Dionex ICS5000+ DP system and Chromeleon 7 software.

A stepwise linear gradient method was employed as shown.

Time (min)	100 mM NaOH (%)	120 mM NaOAc (%) in 100mM NaOH
0	100	0
10	65	35
14	50	50
15	0	100
18	0	100
19	100	0
25	100	0

**TLC:** $n$ -Propanol:Ethanol:H<sub>2</sub>O = 7:1:2 (run once) on Merck TLC Silicagel 60F<sub>254</sub>