

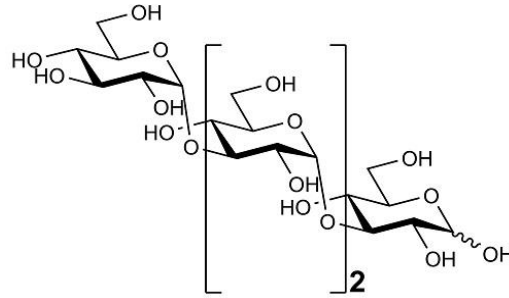


## NIGEROTETRAOSE (Lot 200104)

**O-NGR4**

**01/20**

**CAS:** N/A  
**Molecular Formula:** C<sub>24</sub>H<sub>42</sub>O<sub>22</sub>  
**MW:** 682.9



**PURITY:** > 90% (HPLC)

**HPLC:**

Column: Shodex Asahipak NH2P-40 3E analytical column

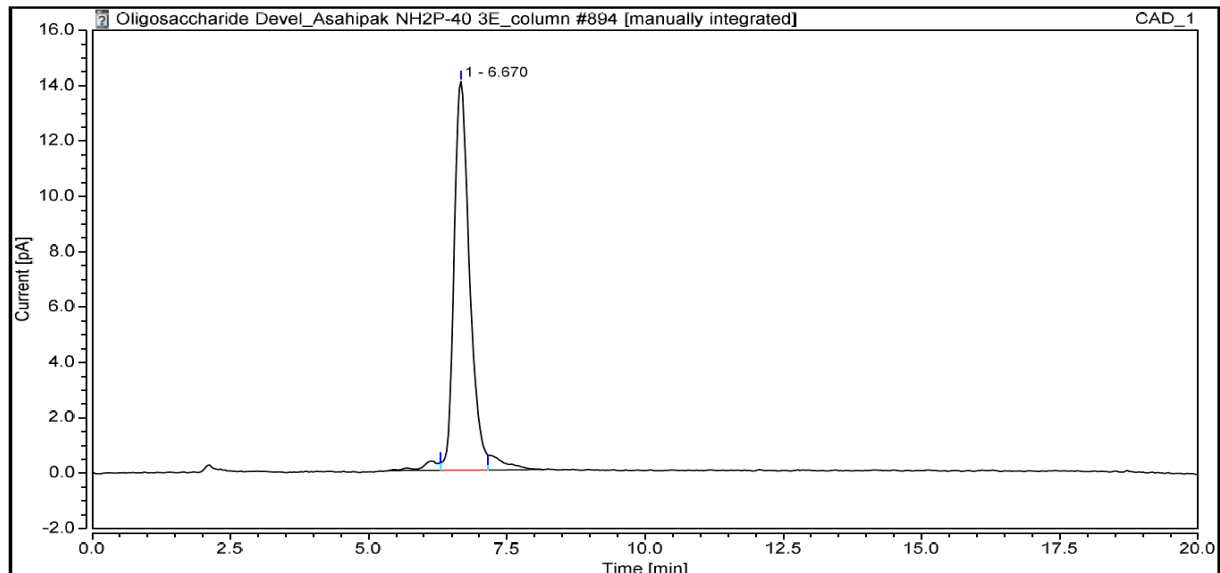
Temperature: 35°C

Flow rate: 0.35 mL/min (Eluent gradient shown below)

Detector: CAD (Charged Aerosol Detector)

HPLC System: Thermofisher U3000 Ultimate and Chromeleon v 7.0 software

| Time (min) | H <sub>2</sub> O (%) | CH <sub>3</sub> CN (%) |
|------------|----------------------|------------------------|
| 0          | 40                   | 60                     |
| 1          | 40                   | 60                     |
| 14         | 60                   | 40                     |
| 16         | 40                   | 60                     |
| 20         | 40                   | 60                     |



**HPAEC-PAD:**

Column: CarboPac PA200 guard and analytical columns (3 x 250 mm)

Temperature: 30°C

Detector: Au electrode; waveform Carbohydrate, standard quad

Flow rate: 0.5 mL/min

IC system: Dionex ICS5000 + DP system and Chromeleon 7 software

A stepwise linear gradient method was employed as shown.

| Time (min) | 100 mM NaOH (%) | 120 mM NaOAc (%) in<br>100 mM NaOH |
|------------|-----------------|------------------------------------|
| 0          | 100             | 0                                  |
| 5          | 55              | 45                                 |
| 9          | 30              | 70                                 |
| 10         | 0               | 100                                |
| 18         | 0               | 100                                |
| 19         | 100             | 0                                  |
| 30         | 100             | 0                                  |

