

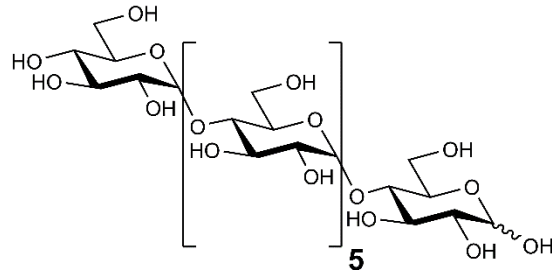


MALTOHEPTAOSE (Lot 181007)

O-MAL7

10/18

CAS: 34620-78-5
Molecular Formula: C₄₂H₇₂O₃₆
MW: 1153.00



PURITY: > 90% (HPLC)

HPLC:

Column: Shodex Asahipak NH2P-40 3E, guard and analytical columns (3 x 25 mm)

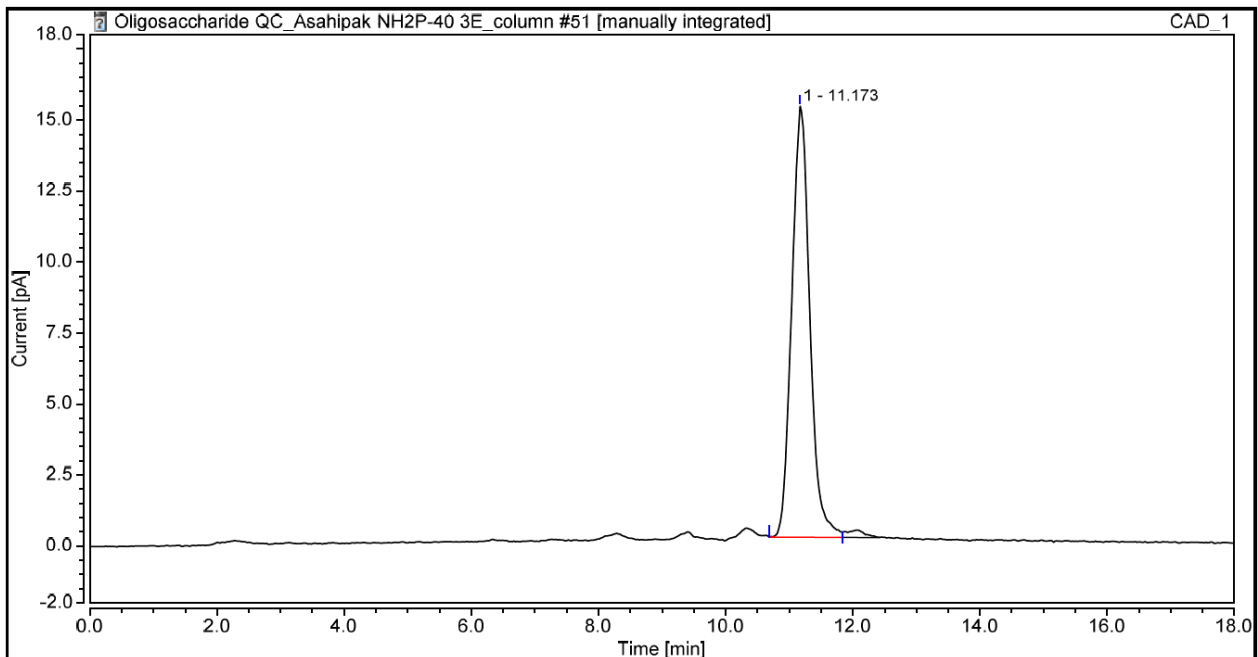
Temperature: 35°C

Flow rate: 0.35 mL/min (Eluent gradient shown below)

Detector: CAD (Charged Aerosol Detector)

HPLC System: Thermofisher U3000 Ultimate and Chromeleon v 7.0 software

Time (min)	H ₂ O (%)	CH ₃ CN (%)
0	40	60
1	40	60
14	60	40
16	40	60
18	40	60



HPAEC-PAD:

Column: CarboPac PA200 guard and analytical columns (3 x 250 mm)

Temperature: 30°C

Detector: Au electrode; waveform Carbohydrate, standard quad

Flow rate: 0.5 mL/min

IC system: Dionex ICS5000 + DP system and Chromeleon 7 software

A stepwise linear gradient method was employed as shown.

Time (min)	100 mM NaOH (%)	120 mM NaOAc in 100 mM NaOH (%)
0	100	0
5	55	45
9	30	70
10	0	100
18	0	100
19	100	0
30	100	0

