

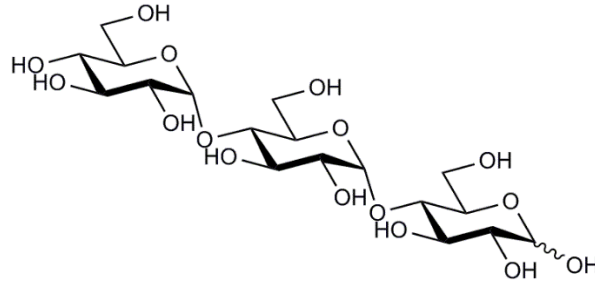


MALTOTRIOSE (Lot 180803)

O-MAL3

10/18

CAS: 1109-28-0
Molecular Formula: C₁₈H₃₂O₁₆
MW 504.4



PURITY: > 95% (HPLC)

HPLC:

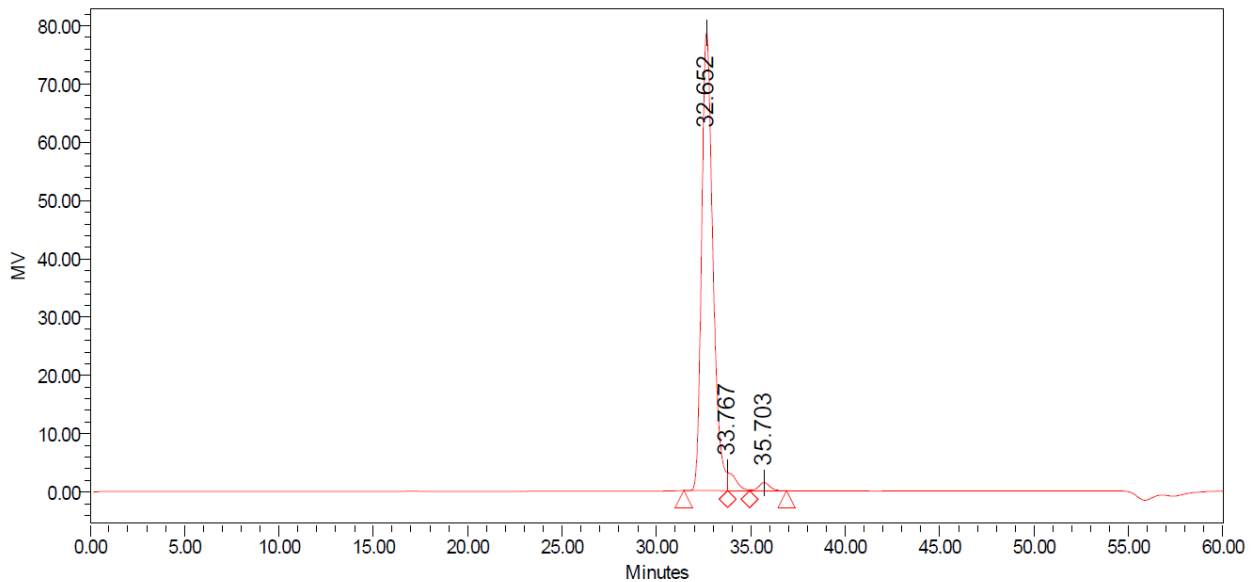
Column: 2 x Tosoh TSK-GEL G2500 PWXL (7.8 x 300 mm) plus guard column (7.8 x 35mm)

Temperature: 80°C

Mobile phase: dH₂O

Flow rate: 0.5 mL/min

HPLC System: Waters Alliance e2695 Separations Module, Waters 2414 RI detector and Empower v 3 software



Peak Name:

	Injection	RT	Area	% Area	Height
1	1	32.652	3255656	95.49	78547
2	1	35.703	56454	1.66	1389
3	1	33.767	97430	2.86	3052

HPAEC-PAD:

Column: CarboPac PA200 guard and analytical columns (3 x 250 mm)

Temperature: 30°C

Detector: Au electrode; waveform Carbohydrate, standard quad

Flow rate: 0.5 mL/min

IC system: Dionex ICS5000+ DP system and Chromeleon 7 software

A stepwise linear gradient method was employed as shown.

Time (min)	100 mM NaOH (%)	120 mM NaOAc (%) in 100mM NaOH
0	100	0
5	55	45
9	30	70
10	0	100
18	0	100
19	100	0
30	100	0

