

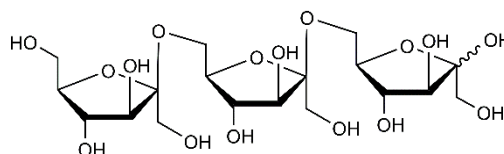


## LEVANTRIOSE (Lot 180303)

O-LEV3

03/18

**MW:** 504.44  
**CAS:** 79324-71-3



### PREPARATION:

Prepared by controlled enzymatic hydrolysis of levan polysaccharide.

**PURITY:** > 90% (HPLC)

### HPLC:

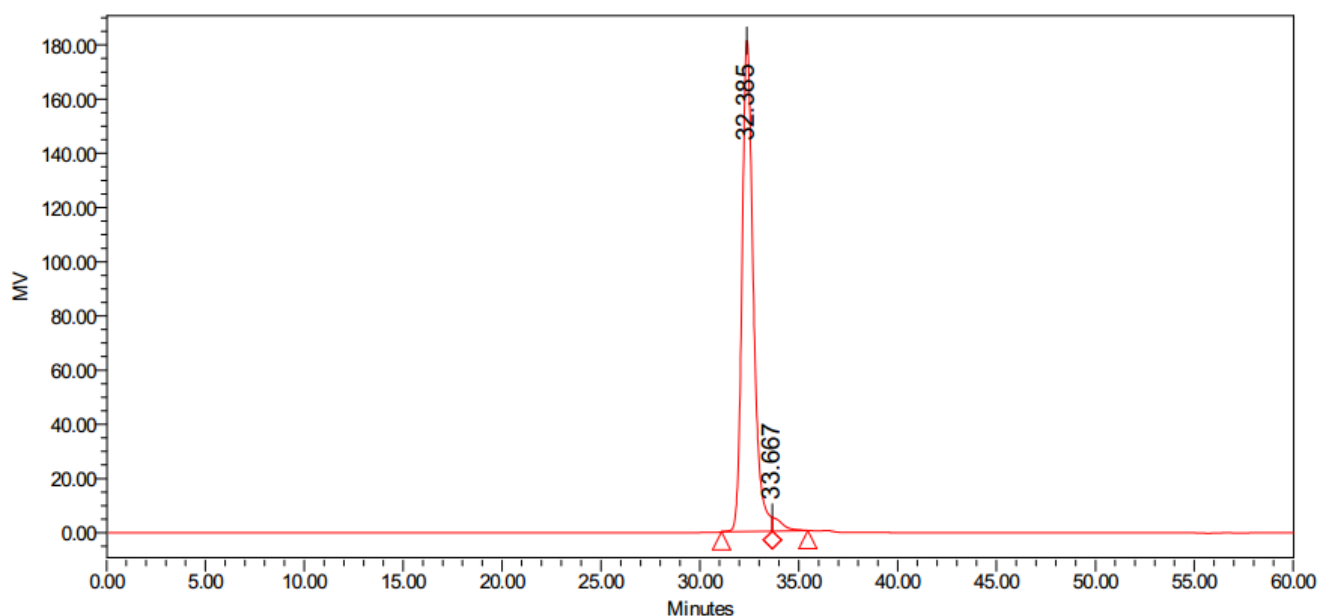
Column: 2 x Tosoh TSK-GEL G2500 PWXL (7.8 x 300 mm) plus guard column (7.8 x 35 mm)

Temperature: 80°C

Mobile phase: dH<sub>2</sub>O

Flow rate: 0.5 mL/min

HPLC System: Waters Alliance e2695 Separations Module, Waters 2414 RI detector and Empower v 3 software



### Processed Channel: 410

	Processed Channel	Retention Time (min)	Area	% Area	Height
1	410	32.385	7168015	97.59	181140
2	410	33.667	177375	2.41	5032

**HPAEC-PAD:**

Column: CarboPac PA200 guard and analytical columns (3 x 250 mm)

Temperature: 20°C

Detector: Au electrode; waveform Carbohydrate, standard quad

Flow rate: 0.5 mL/min

IC system: Dionex ICS5000 + DP system and Chromeleon 7 software

A stepwise linear gradient method was employed as shown.

Time (min)	100 mM NaOH (%)	120 mM NaOAc in 100 mM NaOH (%)
0	100	0
12	45	55
13	0	100
18	0	100
19	100	0
25	100	0

