

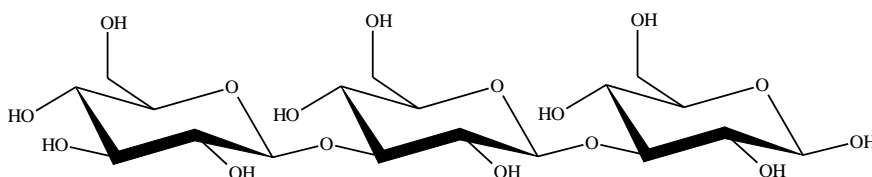


LAMINARITRIOSE (Lot 170603)

O-LAM3

09/17

MW: 504.44
CAS: 3256-04-0



PREPARATION:

Prepared by controlled acid hydrolysis of curdlan.

PURITY: > 95% (HPLC)

HPLC:

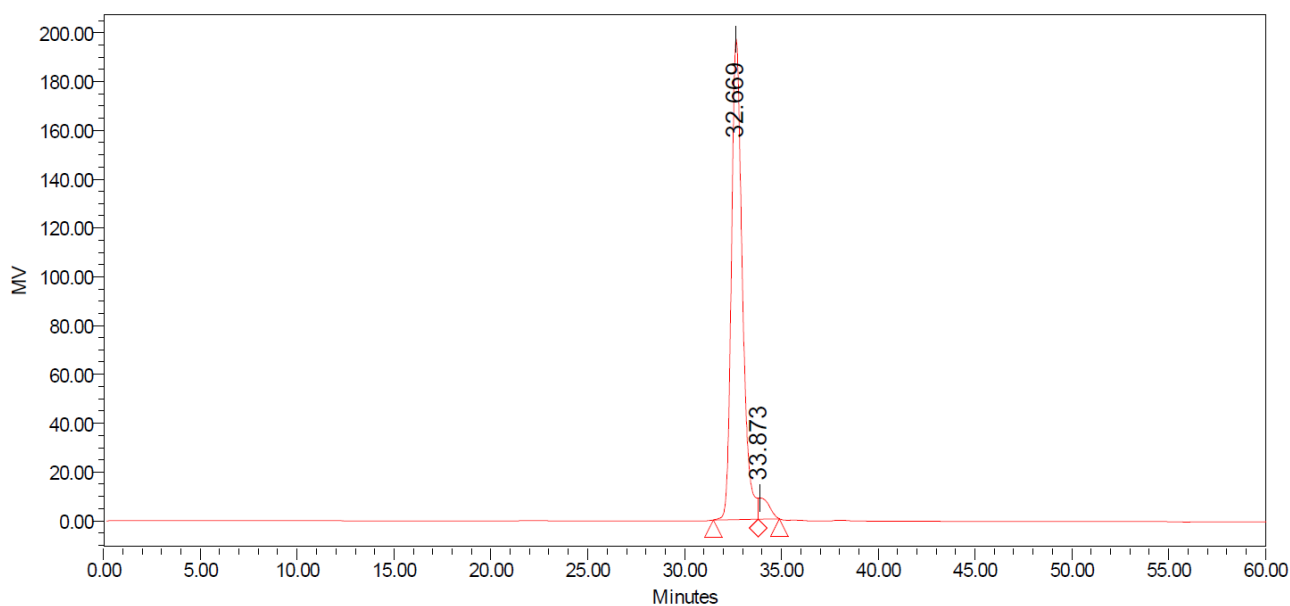
Column: 2 x Tosoh TSK-GEL G2500 PWXL (7.8 x 300 mm) plus guard column (7.8 x 35mm).

Temperature: 80°C

Mobile phase: dH₂O

Flow rate: 0.5 mL/min

HPLC system: Waters Alliance e2695 Separations Module, Waters 2414 RI detector and Empower v 3 software



Processed Channel: 410

	Processed Channel	Retention Time (min)	Area	% Area	Height
1	410	32.669	7699140	95.81	196959
2	410	33.873	336615	4.19	8727

HPAEC-PAD:

Column: CarboPac PA200 guard and analytical columns (3 x 250 mm)

Temperature: 30°C

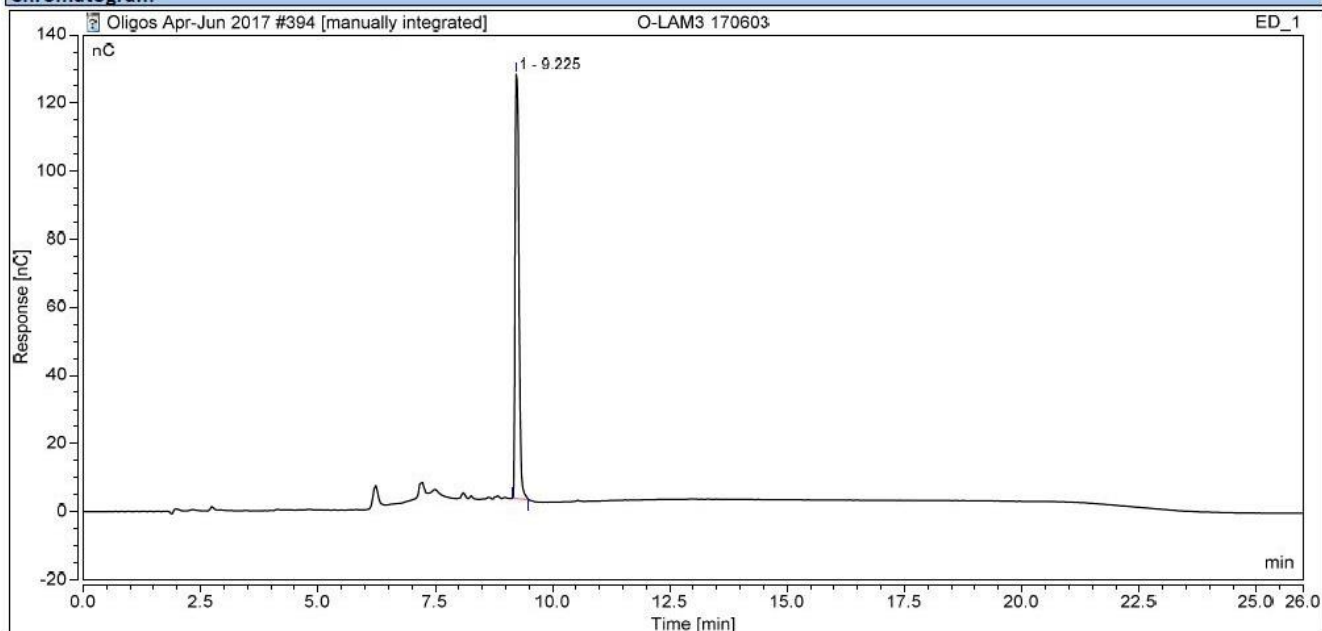
Detector: Au electrode; waveform Carbohydrate, standard quad

Flow rate: 0.5 mL/min

IC system: Dionex ICS5000+ DP system and Chromeleon 7 software

A stepwise linear gradient method was employed as shown.

Time (min)	100 mM NaOH (%)	120 mM NaOAc (%) in 100mM NaOH
0	100	0
2	100	0
9	0	100
18	0	100
20	100	0
26	100	0

Chromatogram**TLC:**l-Propanol:Ethanol:H₂O = 5:2:3 (run once) on Merck TLC Silicagel 60F₂₅₄