

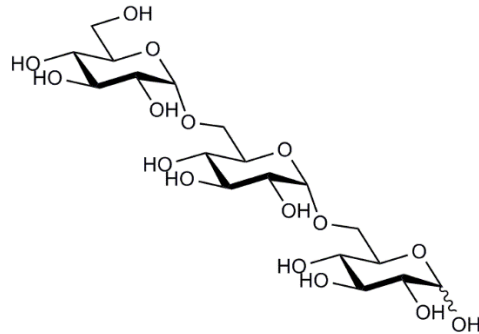


ISOMALTOTRIOSE (Lot 160703)

O-IMO3

07/16

CAS: 3371-50-4
Molecular Formula: C₁₈H₃₂O₁₆
MW: 504.4



PURITY: > 98%

HPLC:

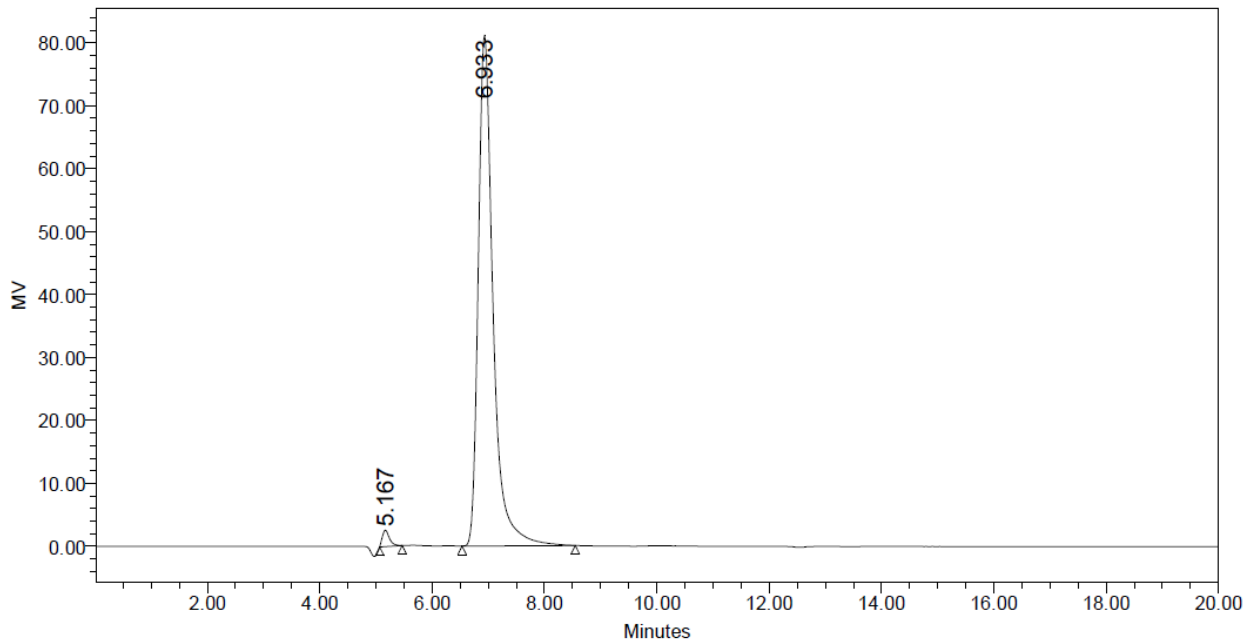
Column: Waters SugarPak I (6.5 x 300 mm)

Temperature: 90°C

Mobile phase: dH₂O with disodium calcium EDTA (50 mg/L) [Sigma Cat No. ED2SC]

Flow rate: 0.5 mL/min

HPLC system: Waters Breeze system, Waters 2410 RI detector and Empower v 2 software



	RT	Area	% Area	Height
1	5.167	22770	1.51	2621
2	6.933	1485980	98.49	81154

HPAEC-PAD:

Column: CarboPac PA200 guard and analytical columns (3 x 250 mm)

Temperature: 30°C

Detector: Au electrode; waveform Carbohydrate, standard quad

Flow rate: 0.5 mL/min

IC system: Dionex ICS5000 + DP system and Chromeleon 7 software

A stepwise linear gradient method was employed as shown.

Time (min)	100 mM NaOH (%)	120mM NaOAc in 100 mM NaOH (%)
0	100	0
5	55	45
9	30	70
10	0	100
18	0	100
19	100	0
30	100	0

