

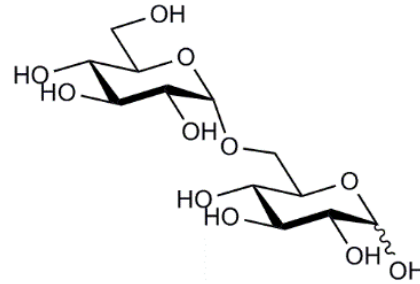


ISOMALTOSE (Lot 160602)

O-IMO2

07/16

CAS: 499-40-1
Molecular Formula: $C_{12}H_{22}O_{11}$
MW: 342.3



PURITY: > 99%

HPLC:

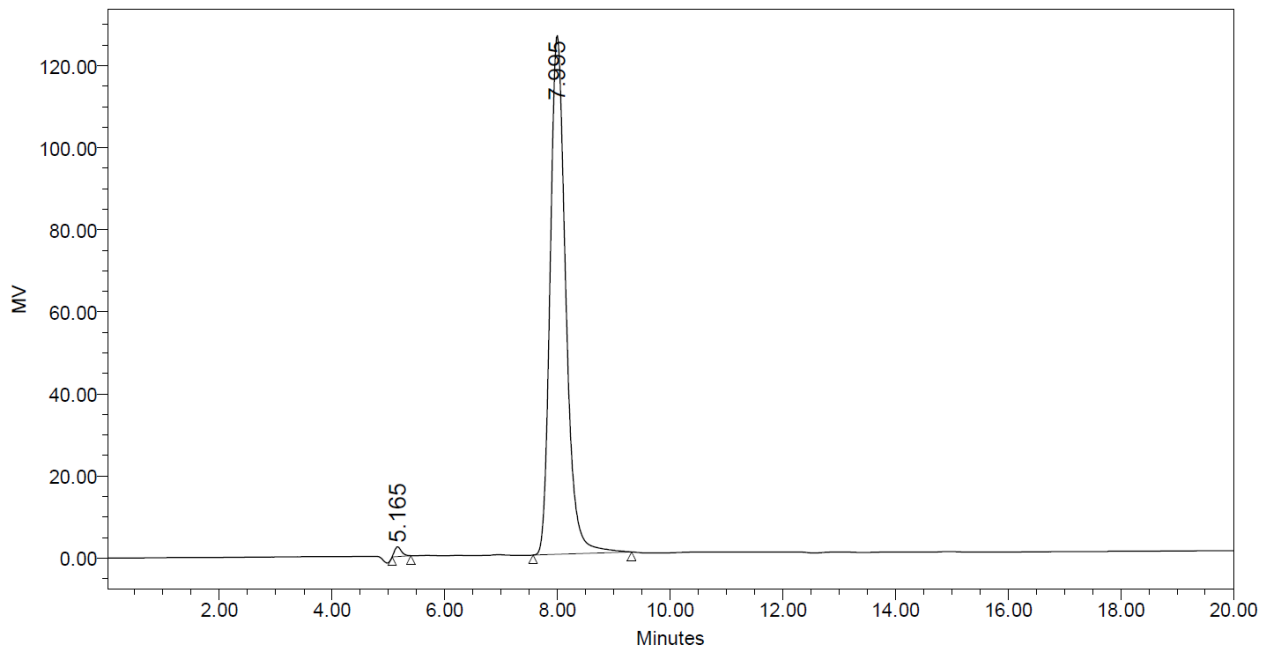
Column: Waters SugarPak I (6.5 x 300 mm)

Temperature: 90°C

Mobile phase: dH_2O with disodium calcium EDTA (50 mg/L) [Sigma Cat No. ED2SC]

Flow rate: 0.5 mL/min

HPLC system: Waters Breeze system, Waters 2410 RI detector and Empower v 2 software



| | RT | Area | % Area | Height |
|---|-------|---------|--------|--------|
| 1 | 5.165 | 19866 | 0.81 | 2388 |
| 2 | 7.995 | 2430363 | 99.19 | 126527 |

HPAEC-PAD:

Column: CarboPac PA200 guard and analytical columns (3 x 250 mm)

Temperature: 30°C

Detector: Au electrode; waveform Carbohydrate, standard quad

Flow rate: 0.5 mL/min

IC system: Dionex ICS5000 + DP system and Chromeleon 7 software

A stepwise linear gradient method was employed as shown.

| Time (min) | 100 mM NaOH (%) | 120mM NaOAc in 100 mM NaOH (%) |
|------------|-----------------|-----------------------------------|
| 0 | 100 | 0 |
| 5 | 55 | 45 |
| 9 | 30 | 70 |
| 10 | 0 | 100 |
| 18 | 0 | 100 |
| 19 | 100 | 0 |
| 30 | 100 | 0 |

