

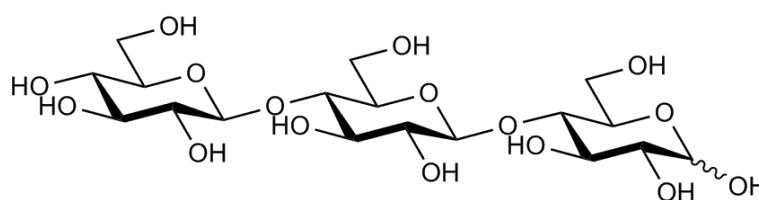


## CELLOTRIOSE (Lot 120303a)

O-CTR-50MG

02/19

**Molecular Formula:**  $C_{18}H_{32}O_{16}$   
**MW:** 504.4  
**CAS:** 33505-34-1



**PREPARATION:**

Prepared by controlled acid hydrolysis of cellulose acetate.

**PURITY:** > 95% (HPLC)

**HPLC:**

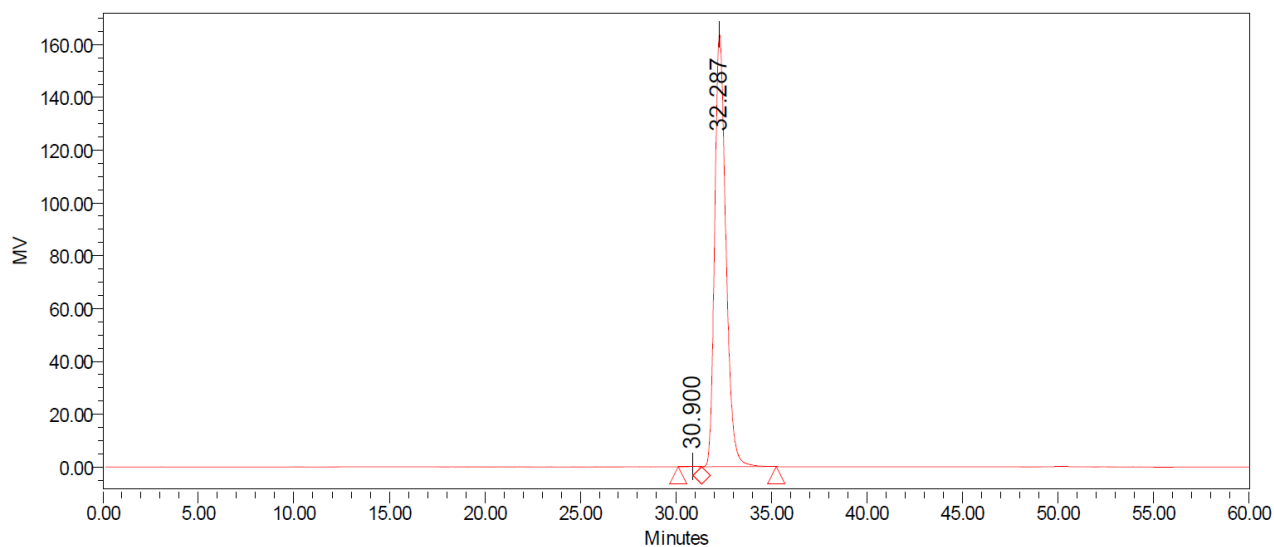
Column: 2 x Tosoh TSK-GEL G2500 PWXL (7.8 x 300 mm) plus guard column (7.8 x 35mm)

Temperature: 80°C

Mobile phase:  $dH_2O$

Flow rate: 0.5 mL/min

HPLC System: Waters Alliance e2695 Separations Module, Waters 2414 RI detector and Empower v 3 software



**Processed Channel: 410**

	Processed Channel	Retention Time (min)	Area	% Area	Height
1	410	30.900	5673	0.08	142
2	410	32.287	6681362	99.92	163764

**HPAEC-PAD:**

Column: CarboPac PA200 guard and analytical columns (3 x 250 mm).

Temperature: 30°C

Detector: Au electrode; waveform Carbohydrate, standard quad

Flow rate: 0.5 mL/min

IC system: Dionex ICS5000+ DP system and Chromeleon 7 software.

A stepwise linear gradient method was employed as shown.

Time (min)	100 mM NaOH (%)	120 mM NaOAc (%)
0	100	0
4	100	0
5	80	20
8	65	35
21	50	50
23	0	100
26	0	100
27	100	0
30	100	0

