

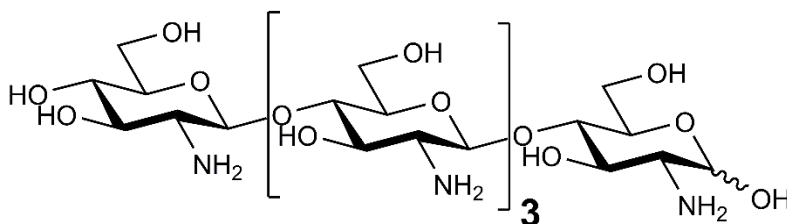


## CHITOSANPENTAOSE (Lot 191205)

**O-CHIS5**

12/19

**Molecular Formula:** C<sub>30</sub>H<sub>57</sub>N<sub>5</sub>O<sub>21</sub>  
**MW:** 823.8  
**CAS:** 41708-94-5



**PURITY:** > 90% (HPAEC-PAD)

**HPAEC-PAD:**

Column: CarboPac PA100 guard and analytical columns (3 x 250 mm)

Temperature: 30°C

Detector: Au electrode; waveform Carbohydrate, standard quad

Flow rate: 0.4 mL/min

IC system: Dionex ICS5000 + DP system and Chromeleon 7 software

An isocratic gradient method was employed as shown

Time (min)	200 mM NaOH (%)	H <sub>2</sub> O (%)
0	10	90
35	10	90

