

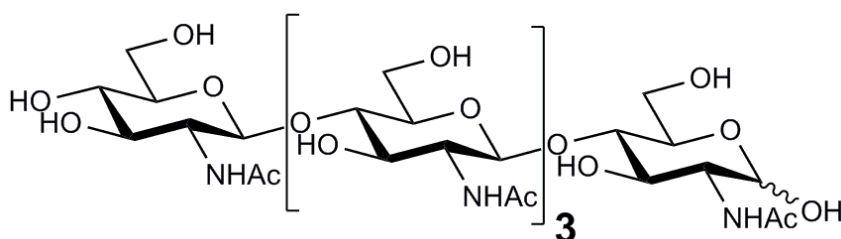


## PENTAACETYL-CHITOPENTAOSE (Lot 140405a)

**O-CHI5**

**04/19**

**Molecular Formula:**  $C_{40}H_{67}N_5O_{26}$   
**MW:** 1034.0  
**CAS:** 36467-68-2



**PREPARATION:**

Prepared by controlled acid hydrolysis of chitin

**PURITY:** > 95% (HPLC)

**HPLC:**

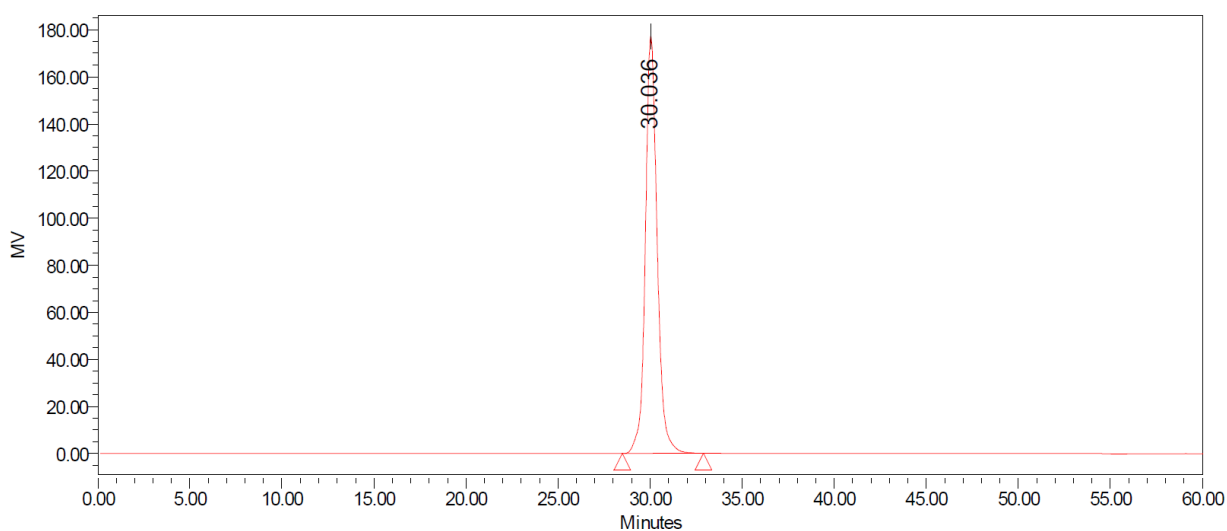
Column: 2 x Tosoh TSK-GEL G2500 PWXL (7.8 x 300 mm) plus guard column (7.8 x 35mm)

Temperature: 80°C

Mobile phase:  $dH_2O$

Flow rate: 0.5 mL/min

HPLC System: Waters Alliance e2695 Separations Module, Waters 2414 RI detector and Empower v 3 software



**Processed Channel: 410**

	Processed Channel	Retention Time (min)	Area	% Area	Height
1	410	30.036	7864859	100.00	177235

**TLC:**

*n*-Propanol:H<sub>2</sub>O:Ammonia = 70:30:1 (run once) on Merck TLC Silicagel 60F<sub>254</sub>

