



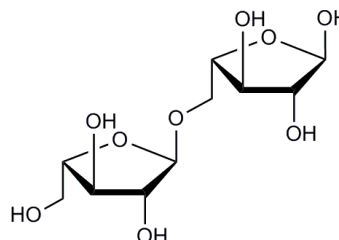
ARABINOBIOSE (Lot 160602)

O-ABI

02/17

MW: 282.24

CAS: 78088-21-8



PREPARATION:

Prepared by controlled enzymic hydrolysis of debranched sugar beet arabinan.

PURITY: > 95%

HPLC:

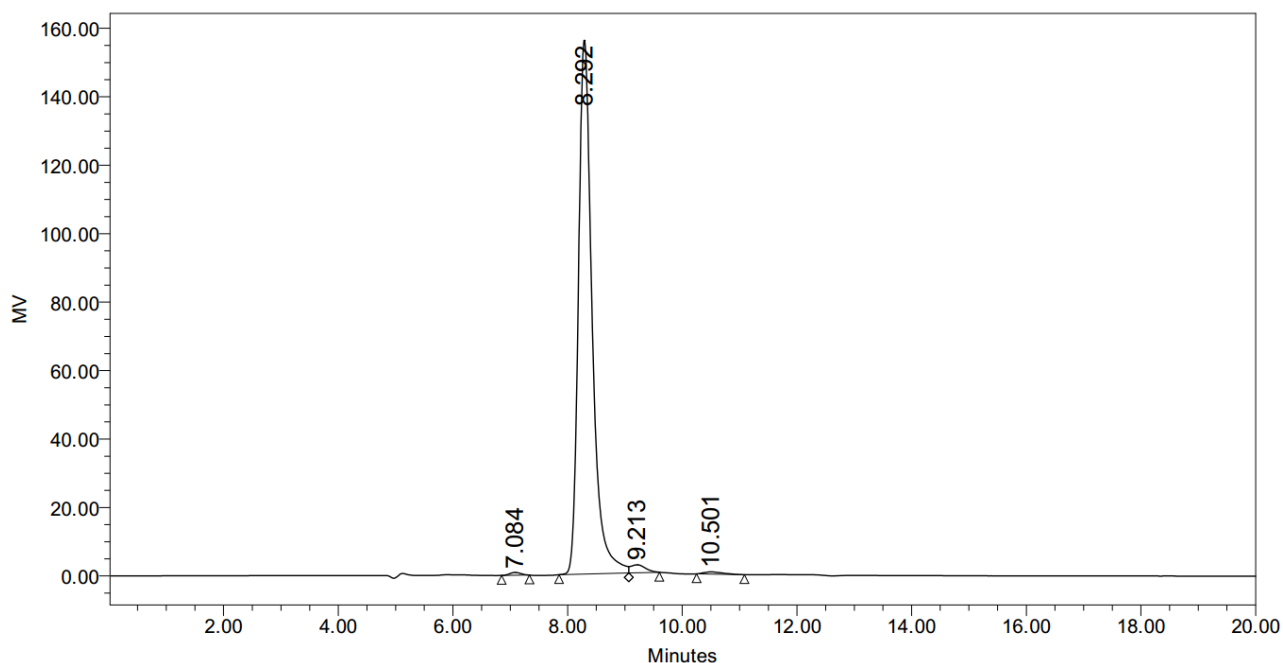
Column: Waters SugarPak I (6.5 x 300 mm)

Temperature: 90°C

Mobile phase: dH₂O with disodium calcium EDTA (50 mg/L) [Sigma Cat No. ED2SC]

Flow rate: 0.5 mL/min

HPLC System: Waters Breeze system, Waters 2410 RI detector and Empower v 3 software



	RT	Area	% Area	Height
1	7.084	11243	0.42	825
2	8.292	2606430	97.44	156325
3	9.213	42183	1.58	2334
4	10.501	15028	0.56	642

HPAEC-PAD:

Column: CarboPac PA200 guard and analytical columns (3 x 250 mm)

Temperature: 30°C

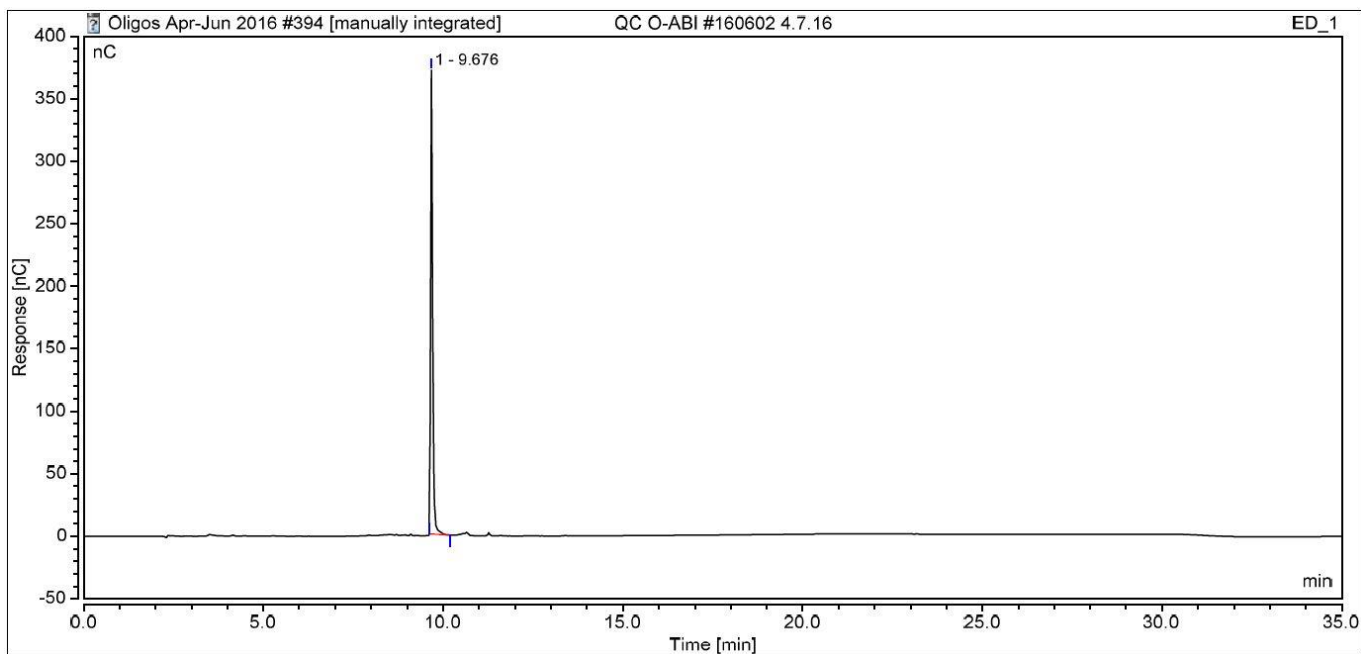
Detector: Au electrode; waveform Carbohydrate, standard quad

Flow rate: 0.4 mL/min

IC system: Dionex ICS5000+ DP system and Chromeleon 7 software

A stepwise linear gradient method was employed as shown.

Time (min)	100 mM NaOH (%)	320 mM NaOAc (%) in 100mM NaOH
0	100	0
2	100	0
17	0	100
27	0	100
28	100	0
35	100	0

**TLC:**Ethyl acetate:Acetic Acid:H₂O = 2:1:1 (run once) on Merck TLC Silicagel 60F₂₅₄