

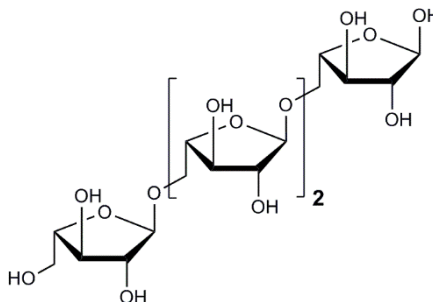


## ARABINOTETRAOSE (Lot 140104a)

**O-ATE**

**09/19**

**Molecular Formula:**  $C_{20}H_{34}O_{17}$   
**MW:** 546.5  
**CAS:** 190852-24-5



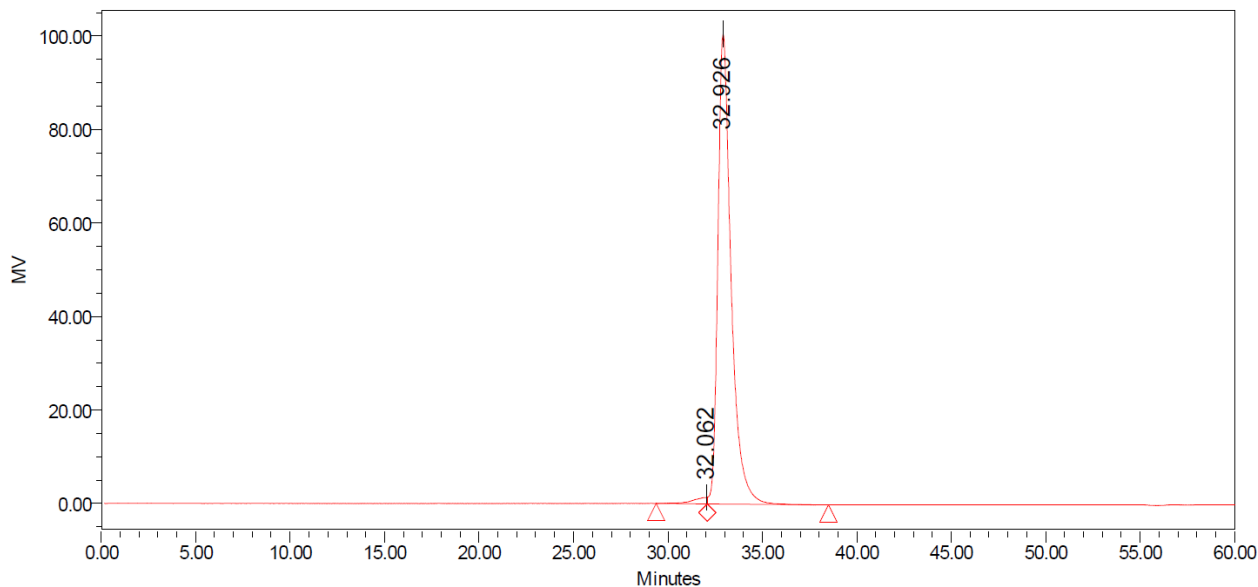
**PREPARATION:**

Prepared by controlled enzymic hydrolysis of debranched sugar beet arabinan

**PURITY:** > 95% (HPLC)

**HPLC:**

Column: 2 x Tosoh TSK-GEL G2500 PWXL (7.8 x 300 mm) plus guard column (7.8 x 35mm)  
 Temperature: 80°C  
 Mobile phase: dH<sub>2</sub>O  
 Flow rate: 0.5 mL/min  
 HPLC System: Waters Alliance e2695 Separations Module, Waters 2414 RI detector and Empower v 3 software



**Processed Channel: 410**

	Processed Channel	Retention Time (min)	Area	% Area	Height
1	410	32.062	69978	1.42	1379
2	410	32.926	4875017	98.58	100583

**HPAEC-PAD:**

Column: CarboPac PA200 guard and analytical columns (3 x 250 mm)

Temperature: 30°C

Detector: Au electrode; waveform Carbohydrate, standard quad

Flow rate: 0.5 mL/min

IC system: Dionex ICS5000+ DP system and Chromeleon 7 software

A stepwise linear gradient method was employed as shown.

Time (min)	100 mM NaOH (%)	320 mM NaOAc (%) in 100mM NaOH
0	100	0
2	100	0
17	0	100
27	0	100
28	100	0
35	100	0

