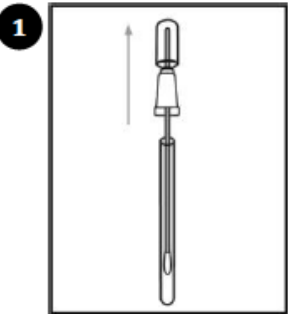
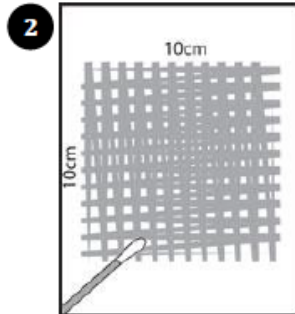


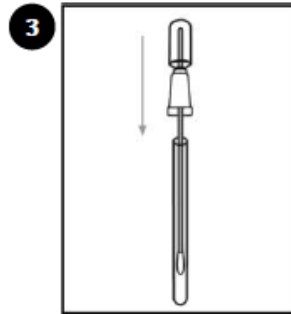
Step 1: Sample Collection



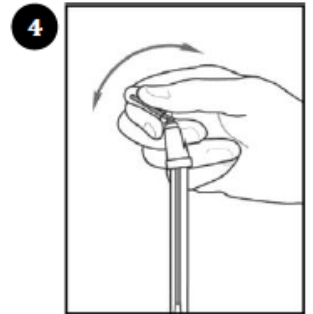
1 Twist and pull swab out of tube.



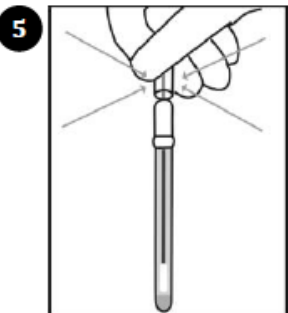
2 Swab a 10x10cm (4x4 in) area.



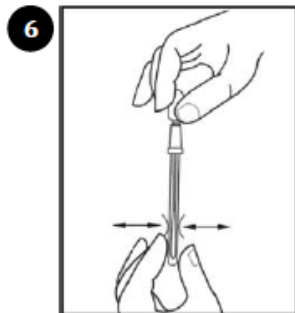
3 Re-insert swab into swab tube.



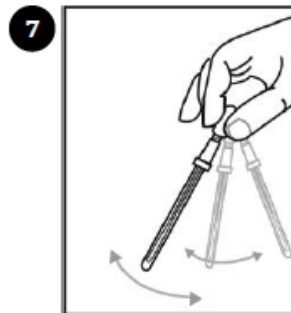
4 Activate Device. Bend bulb to break Snap-Valve.



5 Squeeze bulb twice to release all liquid to bottom of swab tube.

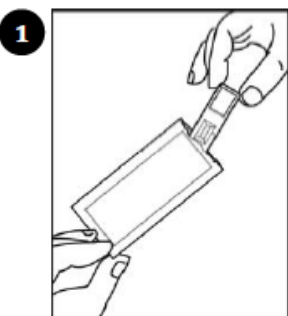


6 Gently massage bottom of tube by squeezing tube 3 times.

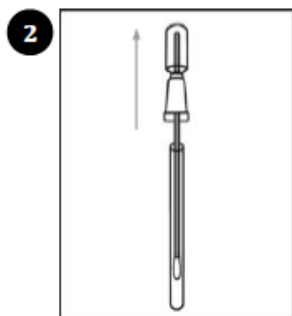


7 Gently shake for 3 seconds

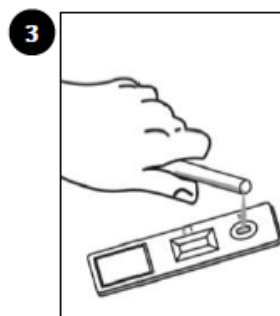
Step 2: Transfer to Lateral Flow Device



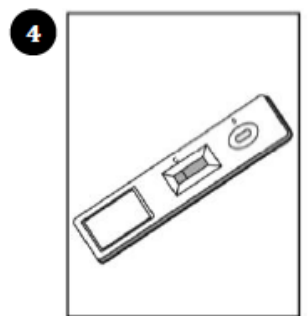
1 Remove lateral flow device (cassette) from foil pouch and place on a flat surface.



2 Remove swab from AllerFlow sample collection swab tube.



3 Tip tube over and pour liquid into sample fill well until cavity is full. Do not overfill sample well.



4 Leave cassette on flat on surface for 10 minutes. Results will be available in 10 minutes.

LIBIOS SARL
83 Rue Edmond Michelet 69490
Pontcharra-Sur-Turdine

Tél : +33 (0)4 74 13 03 02
Fax : +33 (0)4 74 05 28 25
Mail : info@libios.fr
France Web : www.libios.fr

Votre interlocuteur en France



83 Rue Edmond Michelet
69490 Pontcharra-Sur-Turdine
France

Tél : +33 (0)4 74 13 03 02

Fax : +33 (0)4 74 05 28 25

Mail : info@libios.fr

Web : www.libios.fr

