

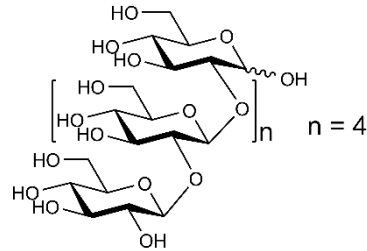


SOPHOROHEXAOSE (Lot 190706)

O-SOPH6

07/19

Molecular Formula: $C_{36}H_{62}O_{31}$
MW: 990.9
CAS: -



PURITY: > 95% (HPLC)

HPLC:

Column: Shodex Asahipak NH2P-40 3E analytical column

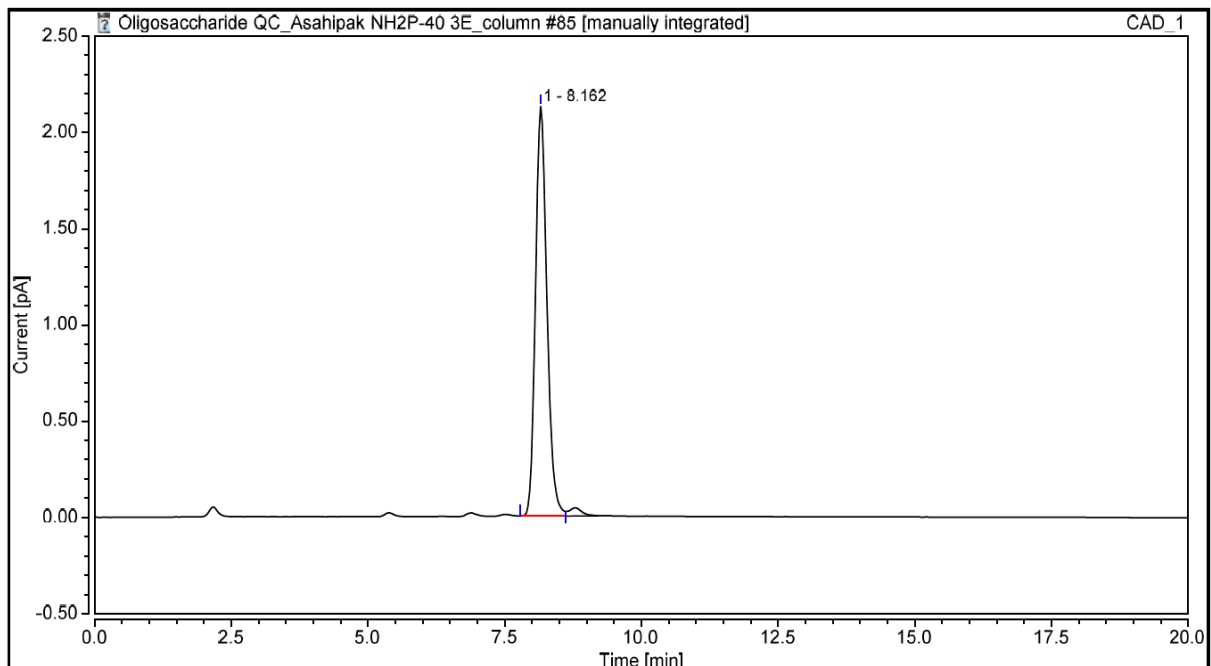
Temperature: 35°C

Flow rate: 0.35 mL/min (Eluent gradient shown below)

Detector: CAD (Charged Aerosol Detector)

HPLC System: Thermofisher U3000 Ultimate and Chromeleon v 7.0 software

Time (min)	H ₂ O (%)	CH ₃ CN (%)
0	40	60
1	40	60
14	60	40
16	40	60
20	40	60



HPAEC-PAD:

Column: CarboPac PA200 guard and analytical columns (3 x 250 mm)

Temperature: 30°C

Detector: Au electrode; waveform Carbohydrate, standard quad

Flow rate: 0.4 mL/min

IC system: Dionex ICS5000 + DP system and Chromeleon 7 software

A stepwise linear gradient method was employed as shown.

Time (min)	100 mM NaOH (%)	120 mM NaOAc in 100 mM NaOH (%)	H ₂ O (%)
0	25	0	75
10	25	0	75
22	23	2	75
23	0	50	50
25	0	100	0
26	25	0	75
30	25	0	75

