

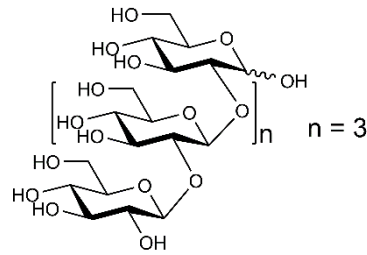


## SOPHOROPENTAOSE (Lot 190705)

**O-SOPH5**

**07/19**

**Molecular Formula:**  $C_{30}H_{52}O_{26}$   
**MW:** 828.7  
**CAS:** -



**PURITY:** > 95% (HPLC)

**HPLC:**

Column: Shodex Asahipak NH2P-40 3E analytical columns

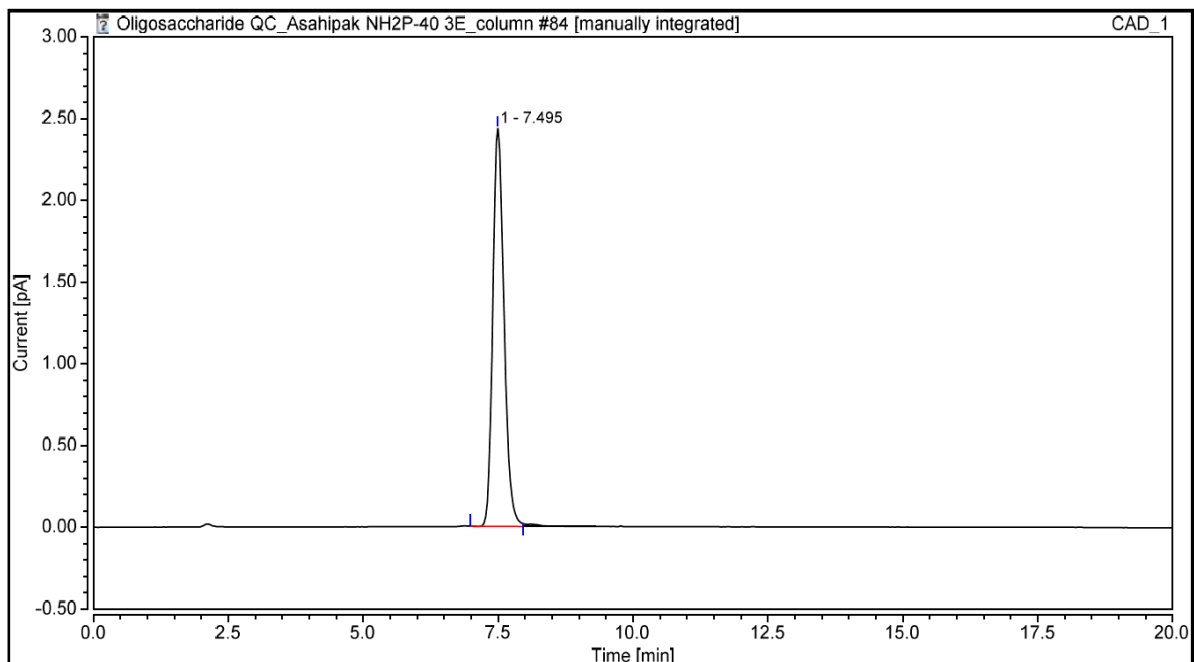
Temperature: 35°C

Flow rate: 0.35 mL/min (Eluent gradient shown below)

Detector: CAD (Charged Aerosol Detector)

HPLC System: Thermofisher U3000 Ultimate and Chromeleon v 7.0 software

Time (min)	H <sub>2</sub> O (%)	CH <sub>3</sub> CN (%)
0	40	60
1	40	60
14	60	40
16	40	60
20	40	60



**HPAEC-PAD:**

Column: CarboPac PA200 guard and analytical columns (3 x 250 mm)

Temperature: 30°C

Detector: Au electrode; waveform Carbohydrate, standard quad

Flow rate: 0.4 mL/min

IC system: Dionex ICS5000 + DP system and Chromeleon 7 software

A stepwise linear gradient method was employed as shown.

Time (min)	100 mM NaOH (%)	120 mM NaOAc in 100 mM NaOH (%)	H <sub>2</sub> O (%)
0	25	0	75
10	25	0	75
22	23	2	75
23	0	50	50
25	0	100	0
26	25	0	75
30	25	0	75

