

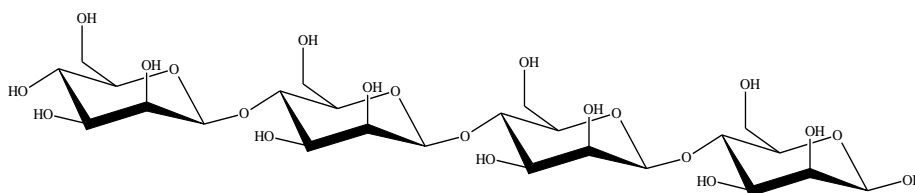


## MANNOTETRAOSE (Lot 170504)

O-MTE

05/17

**MW:** 666.6  
**CAS:** 51327-76-5



### PREPARATION:

Prepared by controlled enzymic hydrolysis of mannan.

**PURITY:** > 95%

### HPLC:

Column: 2 x Tosoh TSK-GEL G2500 PWXL (7.8 x 300 mm) plus guard column (7.8 x 35mm).

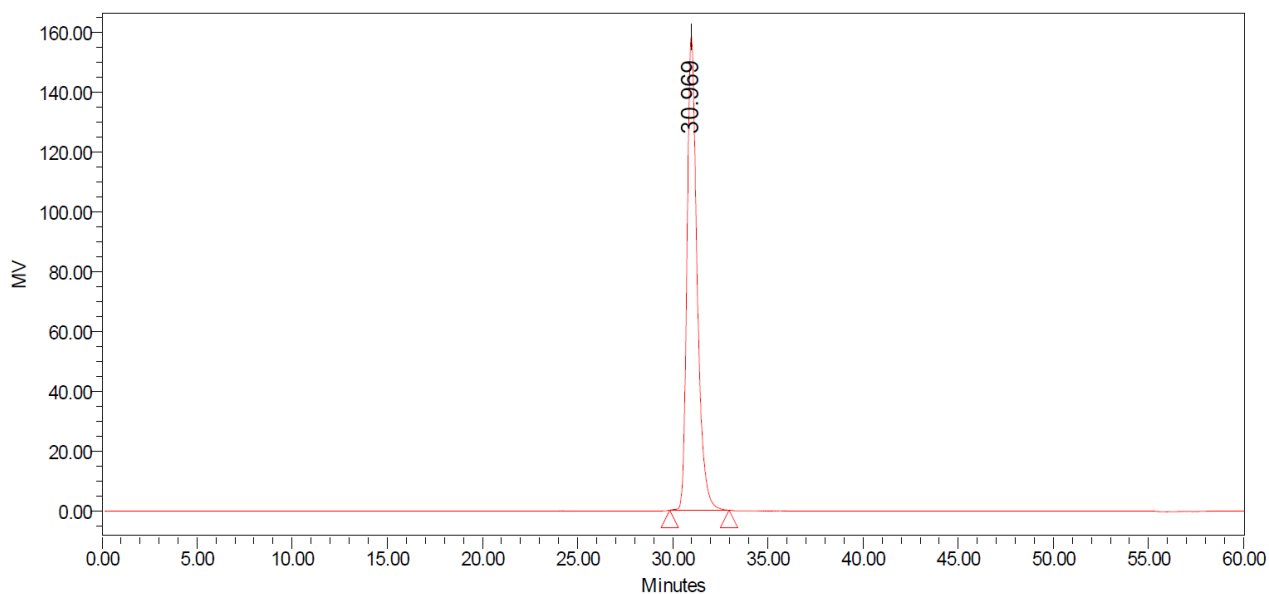
Temperature: 80°C

Mobile phase: dH<sub>2</sub>O

Flow rate: 0.5 mL/min

HPLC System: Waters Alliance e2695 Separations Module, Waters 2414 RI detector and

Empower v 3 software



### Processed Channel: 410

	Processed Channel	Retention Time (min)	Area	% Area	Height
1	410	30.969	5837012	100.00	158217

**HPAEC-PAD:**

Column: CarboPac PA200 guard and analytical columns (3 x 250 mm)

Temperature: 30°C

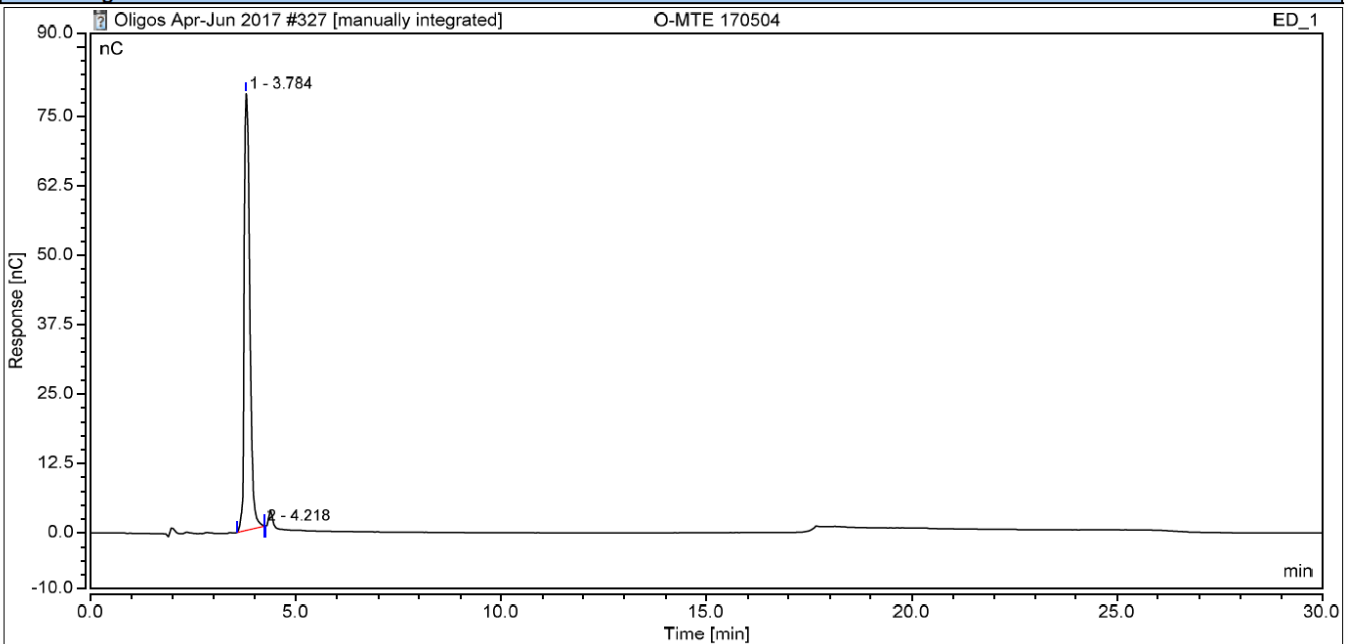
Detector: Au electrode; waveform Carbohydrate, standard quad

Flow rate: 0.5 mL/min

IC system: Dionex ICS5000+ DP system and Chromeleon 7 software

A stepwise linear gradient method was employed as shown.

Time (min)	100 mM NaOH (%)	120 mM NaOAc (%) in 100mM NaOH
0	100	0
2	100	0
14	85	15
14.5	0	100

**Chromatogram****TLC:** $n$ -Propanol:Nitromethane:H<sub>2</sub>O = 7:1:2 (run once) on Merck TLC Silicagel 60F<sub>254</sub>