



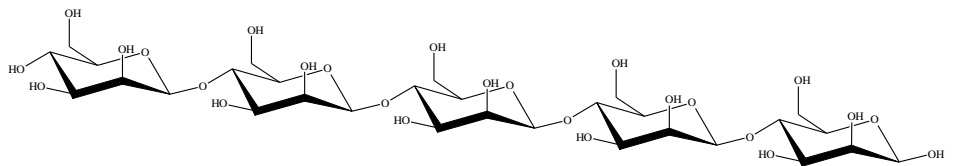
## MANNOPENTAOSE (Lot 171005)

O-MPE

12/17

MW: 828.72

CAS: 70281-35-5



### PREPARATION:

Prepared by controlled enzymic hydrolysis of mannan.

PURITY: > 98% (HPLC)

### HPLC:

Column: 2 x Tosoh TSK-GEL G2500 PWXL (7.8 x 300 mm) plus guard column (7.8 x 35mm)

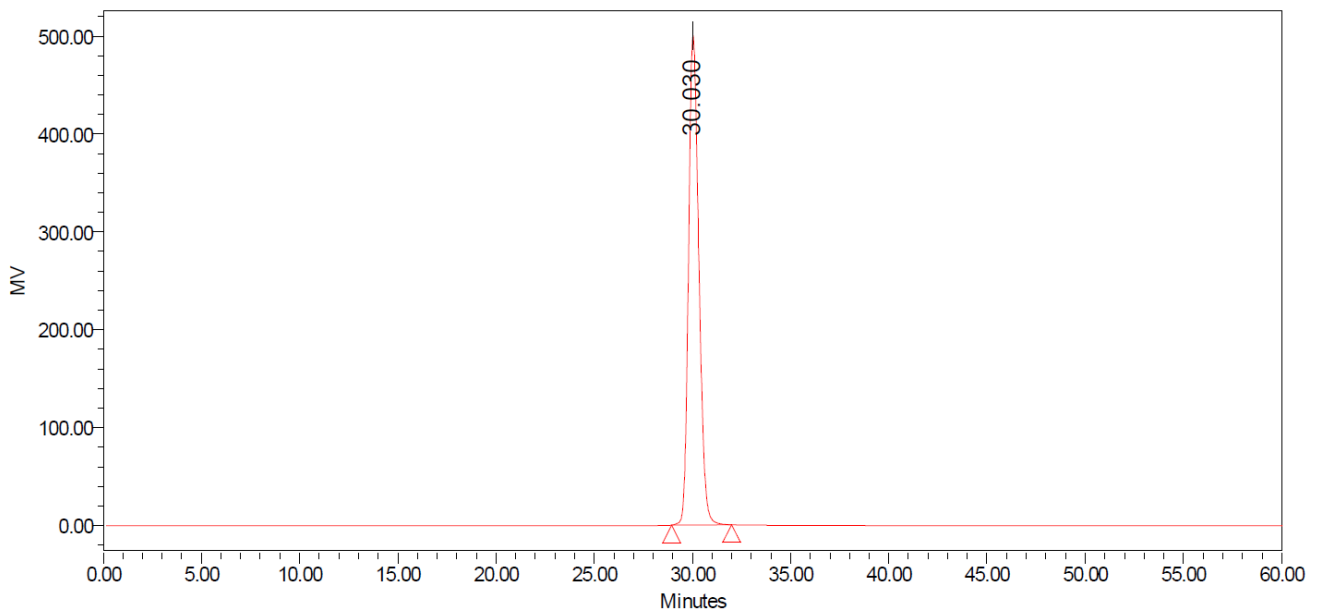
Temperature: 80°C

Mobile phase: dH<sub>2</sub>O

Flow rate: 0.5 mL/min

HPLC System: Waters Alliance e2695 Separations Module, Waters 2414 RI detector and Empower v 3 software

Auto-Scaled Chromatogram



### Processed Channel: 410

Processed Channel	Retention Time (min)	Area	% Area	Height
1 410	30.030	18252549	100.00	500114

### HPAEC-PAD:

Column: CarboPac PA200 guard and analytical columns (3 x 250 mm)

Temperature: 30°C

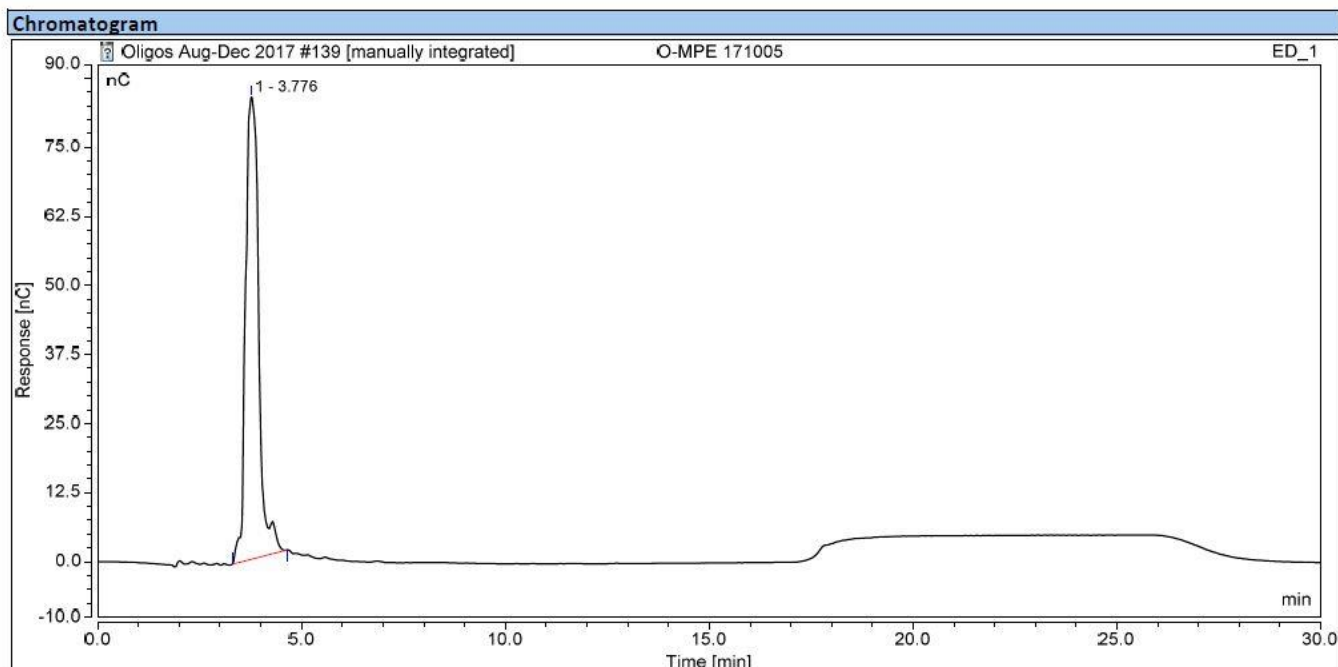
Detector: Au electrode; waveform Carbohydrate, standard quad

Flow rate: 0.5 mL/min

IC system: Dionex ICS5000+ DP system and Chromeleon 7 software

A stepwise linear gradient method was employed as shown.

Time (min)	100 mM NaOH (%)	120 mM NaOAc (%) in 100mM NaOH
0	100	0
2	100	0
14	85	15
14.5	0	100
23	0	100
24	100	0
30	100	0



### TLC:

*n*-Propanol:Nitromethane:H<sub>2</sub>O = 7:1:2 (run once) on Merck TLC Silicagel 60F<sub>254</sub>

