

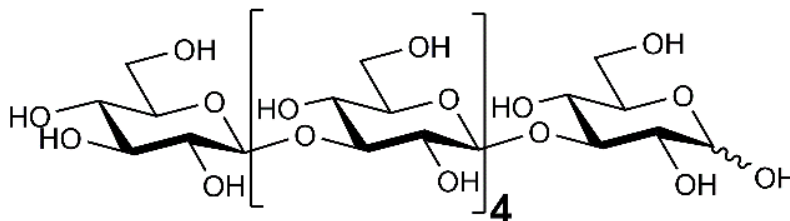


## LAMINARIHXAOSE (Lot 190606)

**O-LAM6**

06/19

**Molecular Formula:** C<sub>36</sub> H<sub>62</sub> O<sub>31</sub>  
**MW:** 990.9  
**CAS:** 29842-30-6



**PREPARATION:**

Prepared by controlled acid hydrolysis of curdlan.

**PURITY:** > 95% (HPLC)

**HPLC:**

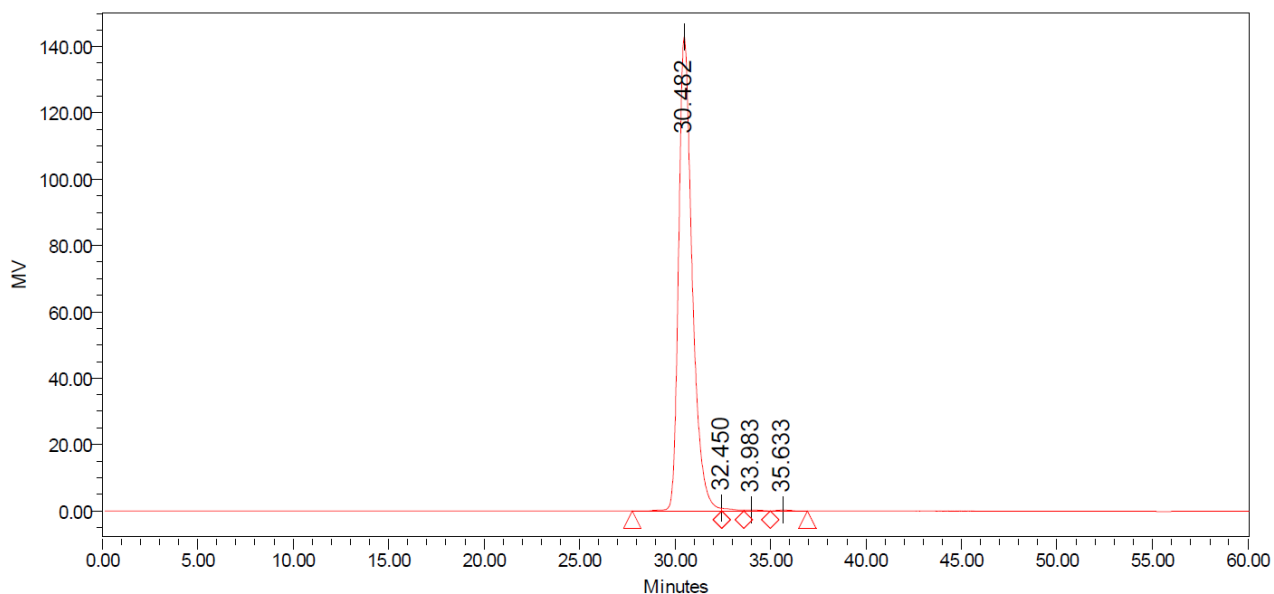
Column: 2 x Tosoh TSK-GEL G2500 PWXL (7.8 x 300 mm) plus guard column (7.8 x 35mm)

Temperature: 80°C

Mobile phase: dH<sub>2</sub>O

Flow rate: 0.5 mL/min

HPLC System: Waters Alliance e2695 Separations Module, Waters 2414 RI detector and Empower v 3 software



**Processed Channel: 410**

	Processed Channel	Retention Time (min)	Area	% Area	Height
1	410	30.482	7074882	99.07	142997
2	410	32.450	34524	0.48	805
3	410	33.983	17279	0.24	309
4	410	35.633	14380	0.20	275