

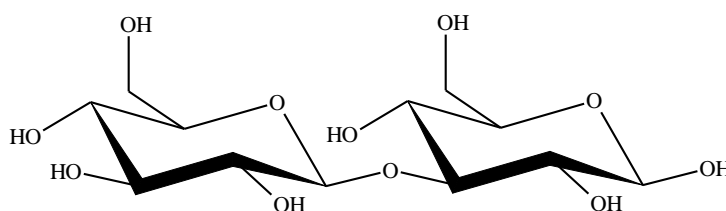


LAMINARIBIOSE (Lot 150402a)

O-LAM2

05/16

MW: 342.30
CAS: 34980-39-7



PREPARATION:

Prepared by controlled acid hydrolysis of curdlan.

PURITY: > 95%

HPLC:

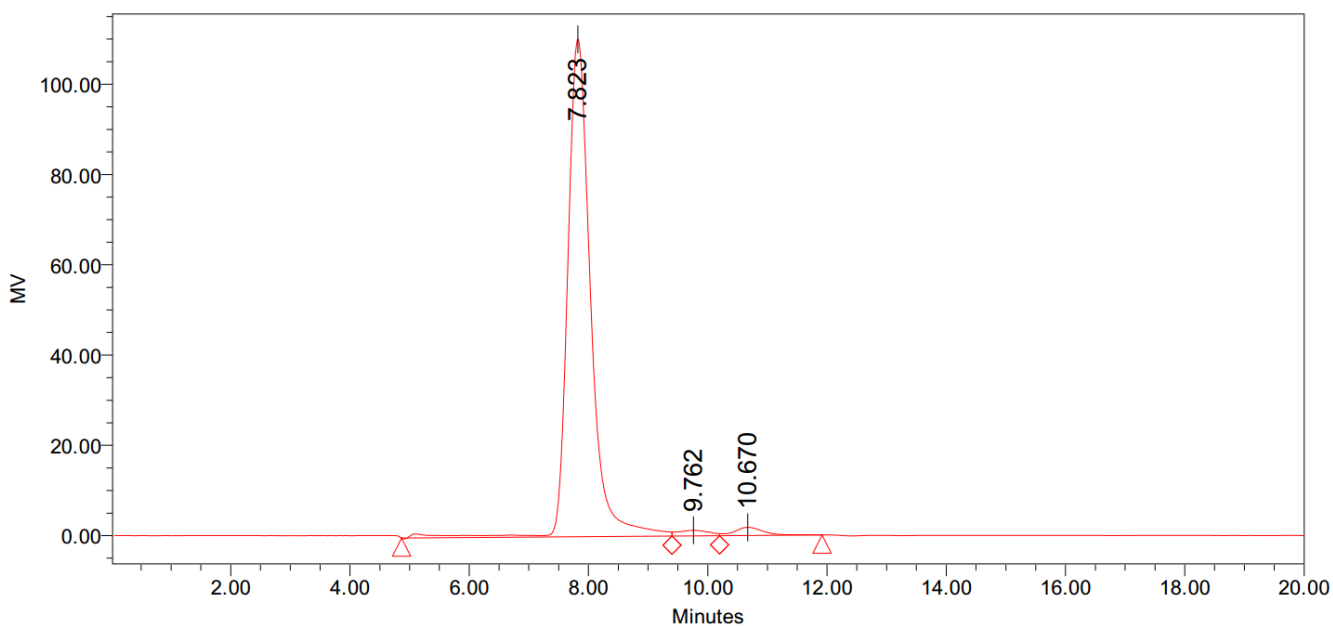
Column: Waters SugarPak I (6.5 x 300 mm)

Temperature: ~ 95°C

Mobile phase: dH₂O with disodium calcium EDTA (50 mg/L) [Sigma Cat No. ED2SC]

Flow rate: 0.5 mL/min

HPLC System: Waters Breeze system, Waters 2410 RI detector and Empower software v 2



Peak Results

Name	RT	Area	% Area	Height	% Height
1	7.823	2983220	96.49	110333	97.28
2	9.762	46109	1.49	1249	1.10
3	10.670	62533	2.02	1834	1.62