

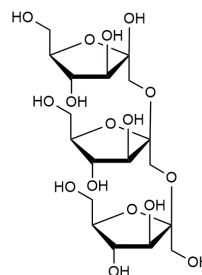


INULOTRIOSE (Lot 161003)

O-INU3

04/17

CAS: 58208-59-6
Molecular Formula: C₁₈H₃₂O₁₆
MW: 504.44



PURITY: > 90% (HPLC)

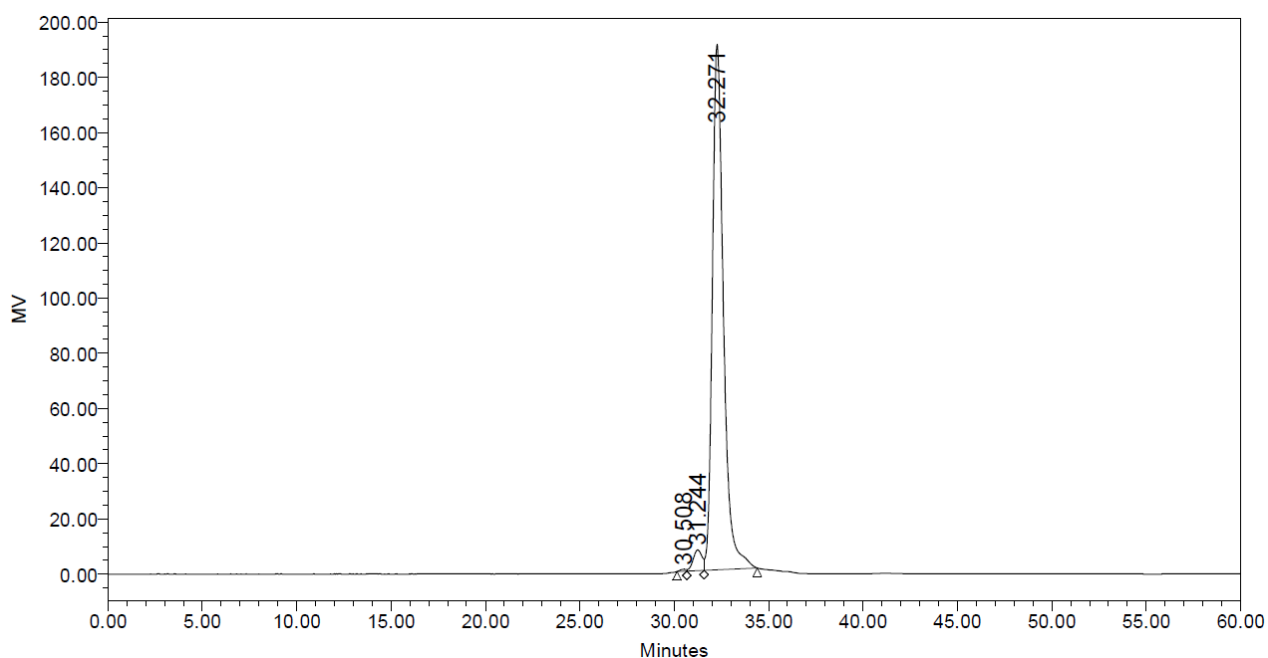
HPLC:

Column: 2 x Tosoh TSK-GEL G2500 PWXL (7.8 x 300 mm) plus guard column (7.8 x 35 mm)
Temperature: 80°C

Mobile phase: dH₂O

Flow rate: 0.5 mL/min

HPLC System: Waters Alliance e2695 Separations Module, Waters 2414 RI detector and Empower v 3 software



	RT	Area	% Area	Height
1	30.508	15776	0.20	724
2	31.244	245905	3.06	7508
3	32.271	7768062	96.74	190325

HPAEC-PAD:

Column: CarboPac PA200 guard and analytical columns (3 × 250 mm)

Temperature: 30°C

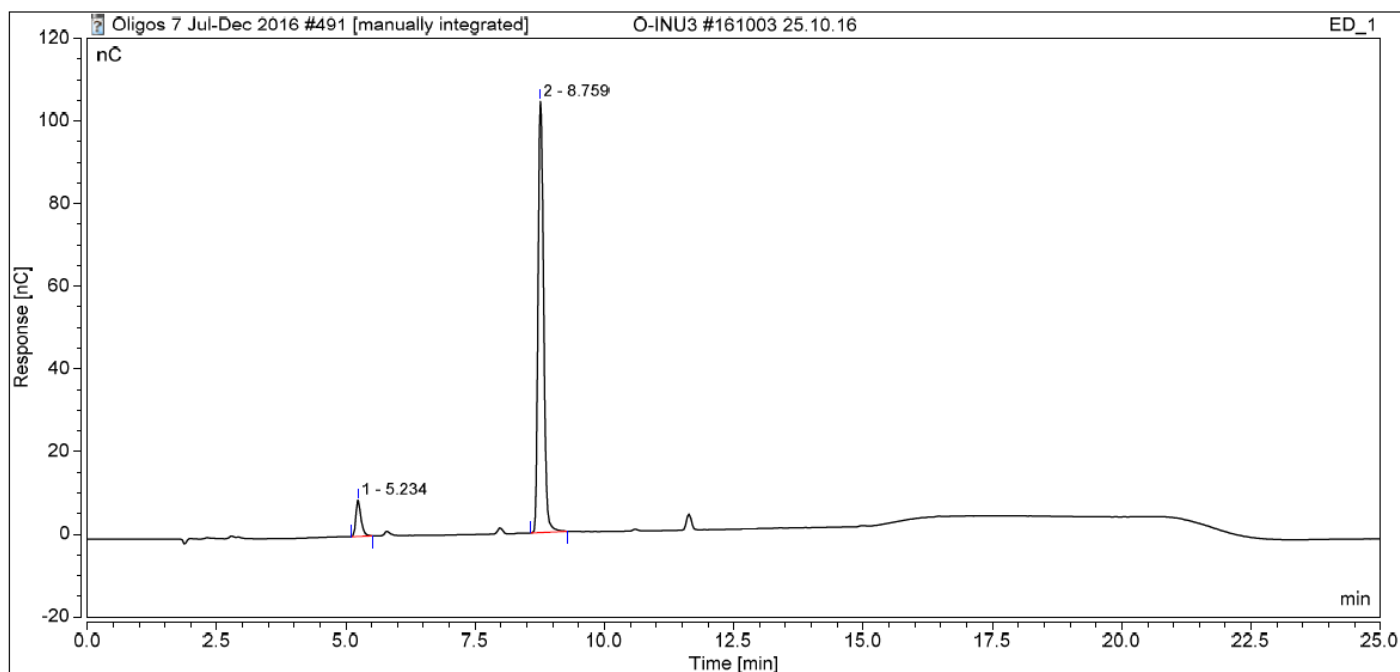
Detector: Au electrode; waveform Carbohydrate, standard quad

Flow rate: 0.5 mL/min

IC system: Dionex ICS5000 + DP system and Chromeleon 7 software

A stepwise linear gradient method was employed as shown.

Time (min)	100 mM NaOH (%)	120 mM NaOAc in 100 mM NaOH (%)
0	100	0
12	45	55
13	0	100
18	0	100
19	100	0
25	100	0

**TLC:***n*-Propanol: Ethanol: H₂O = 7:1:2 (run once) on Merck TLC Silicagel 60F₂₅₄